

## CP 506 Smoke and Acoustic Sealant

### Applications

- Sealing construction joints and through-penetration openings in non fire-rated acoustical assemblies and smoke partitions  
(Not for use in fire-rated applications)

### Advantages

- Easy to dispense, apply and tool
- Excellent airborne sound insulation properties
- Low shrinkage after curing
- Easy cleaning with water
- Paintable

### Tested in accordance with:

- ASTM E 90
- ASTM C 834
- ASTM E 84



Restricts smoke migration



Excellent sound insulation characteristics with application based testing in accordance with ASTM E 90.

Technical Data	CP 506
Color	white
Chemical basis	acrylic
Storage and transport temperature range	40°F to 77°F (5°C to 25°C)
Curing time (73°F / 50% relative humidity)	approx. 3 mm / 3 days
Skin-forming time (73°F / 50% relative humidity)	approx. 15 min
Application temperature range	40°F to 104°F (5°C to 40°C)
Shelf life	24 months
Sound transmission classification (ASTM E90)	STC 63 (per tested construction type)
Movement capability (ISO 11600)	approx. 12.5%
Mold and mildew (ASTM G21)	mold resistant
Surface burning characteristics (ASTM E84)	Flame spread: 10 Smoke development: 10
Air leakage (Modified UL 2079 L-Rating)	L-Rating at Ambient = Less than 1 CFM / Lin Ft. L-Rating at 400°F = Less than 1 CFM / Lin Ft.

Description		Package Contents	Item No.
CP 506 smoke and acoustic sealant (580 ml foil pack)	①	Case of 20 foils	00412590
CP 506 smoke and acoustic sealant (5 gallon pail)	②	1 pail	00412591



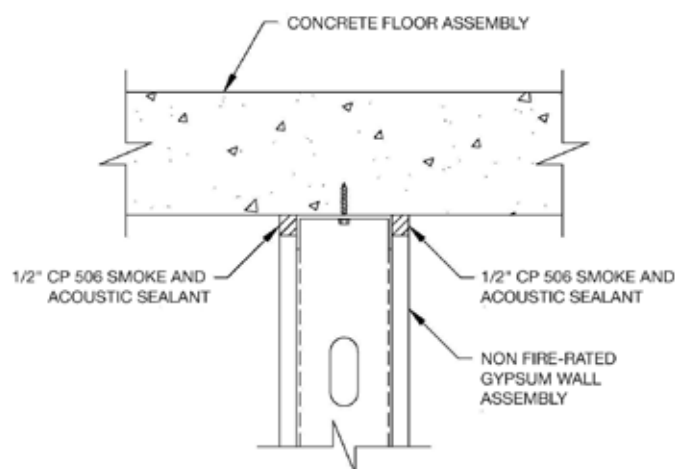
**Hilti. Outperform. Outlast.**

## General guidelines for common acoustic seal applications

### Note

- These are suggested installation guidelines for common applications
- Obtain architect and appropriate authority having jurisdiction approval for specific application of use prior to installation
- For additional details refer to specific Hilti sound transmission and air leakage test reports
- Not for use in fire-rated assemblies

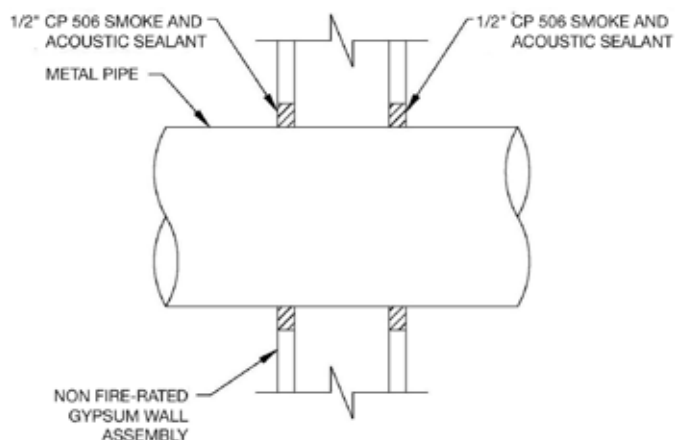
### Top of Wall



**System STC = 63**

(refer to STC test reports for wall construction details)

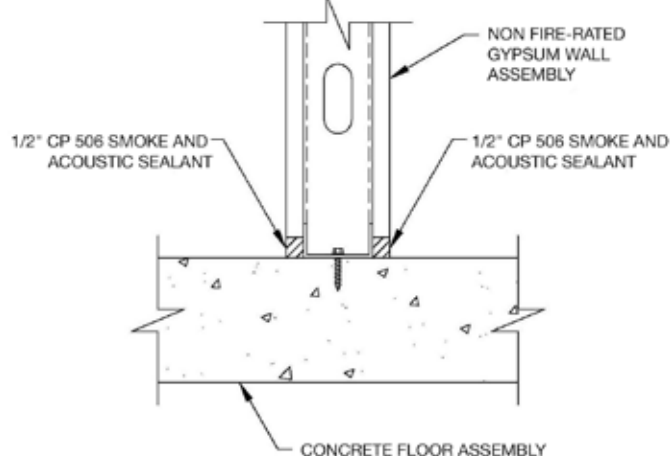
### Through-Penetration



**System STC = 63**

(refer to STC test reports for wall construction details)

### Bottom of Wall



**System STC = 63**

(refer to STC test reports for wall construction details)

## Installation instructions for CP 506

### Notice

- Before handling, read Material Safety Data Sheet and product label for safe usage and health information.
- Instructions below are general guidelines — always refer to the product label, applicable product test reports and/or architect requirements

### Opening

1. Clean the opening. Surfaces to which CP 506 will be applied should be cleaned of loose debris, dirt, oil, wax, grease, and other contaminants. The surface should be moisture and frost free.

### Application of sealant

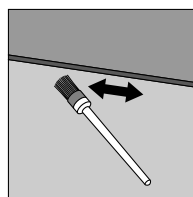
2. Apply sealant in opening at required depth
3. Smooth sealant with a trowel before the skin forms. Once cured, CP 506 can only be removed mechanically

### Not for use

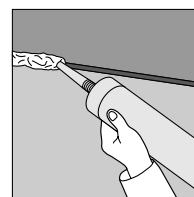
- On areas immersed in water

### Storage

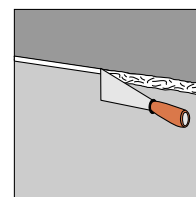
- Store only in the original packaging in a location protected from moisture at a temperature of 40°F to 77°F (5°C to 25°C)
- Observe expiration date on package



1. Clean opening



2. Apply CP 506



3. Tool CP 506

**Hilti. Outperform. Outlast.**